

■ ASSEMBLY INSTRUCTION

1) General Remarks

- Assembly only by professional staff, e.g. automotive mechanics.
- The DURANBOARD is certified according to EN 1789 (European safety standards).
- The assembler is responsible for sufficient crashworthiness of the attachment in the vehicle and the assembled stretcher-fixation.
- Please pay close attention to country-related laws and regulations.
- Please pay also close attention to the assembly instruction of the stretcher.
- Complaints caused by improper installation or incorrect operations will be refused.
- Subject to technical changes.

2) Assembly of the Loading Ramp

To avoid damages in transit, the loading ramp is packed separately.

- Please assemble in compliance with the following instructions:
 - a) Fit the gas spring to the plate, lock the screw with Loctite 243.



2) Assembly of the Loading Ramp

- b) Set up the other screws, fix the ramp holder with both screws only on one side. On the other side mount the ramp holder only with one screw !

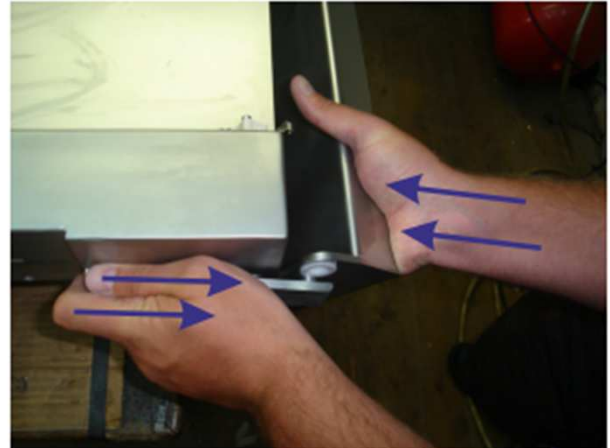
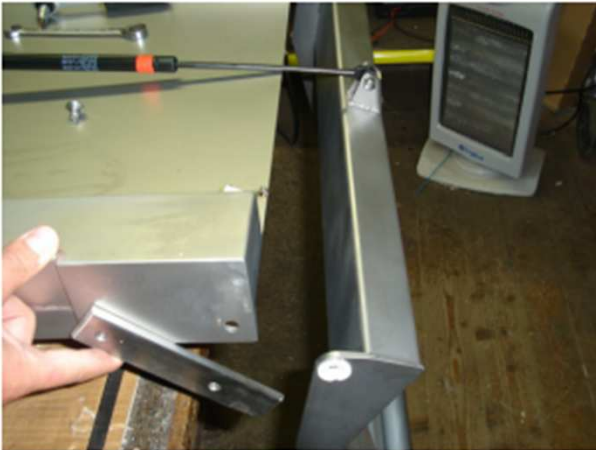


- c) Hook in the ramp only on one side, then fix the gas spring at the ramp.



2) Assembly of the Loading Ramp

- d) When the gas spring is fixed at the loading ramp, then press the ramp against the force of the gas spring to hook in the ramp-holder.



- e) Align the ramp-holder and fix the last screw.



3) Preparation of the Vehicle:

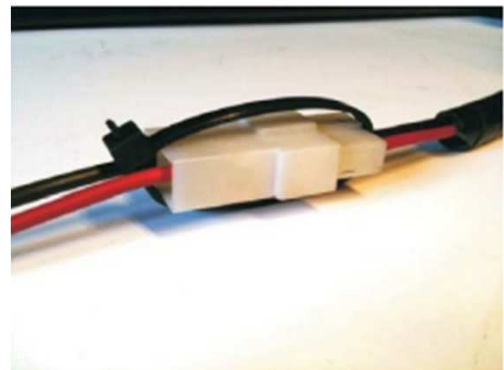
To ensure trouble free service life of your DURANBOARD, we STRICTLY recommend to follow these instructions:

- To find the right position in the vehicle, refer to the attachment on the last page of this assembly instruction with drawings and dimensions.
- Install 4 pcs. of nuts M8 by welding below the vehicle floor in suitable positions. Those anchorage points must be performed according to EN 1789.
- **If you use an additional lateral movement device, proceed the similar way with the required screws and nuts.**

4) Electric Connection:

- Connect the attached wires to

Ignition (red): terminal 15
Ground (brown): terminal 31
and **fuse it with 30 Ampere.**
- Finally secure it against faulty contact by cable tie.



5) Installation:

- Use attached steel screws M8x50 or M8x80 (depending on the thickness of the vehicle-floor) and washers.



5) Installation

- Finally fit the attached plugs to the screw heads, as seen below.

